

br
ea
th
collection



LONGHI



BREATH Collection

NIP | Sofa

COCOON | Armchair

HALO | Small table

OFFSET | Small table

HARPER | Small table

designed by Margherita Fanti

EDGAR | Sofa

MEGAN | Armchair

RACHEL | Small table

TOBY | Pouf & Small table

MAVERICK | Table

DOMINIC | Table

KIRA | Chair

STEVEN | Cabinet

KIMMEL | Cabinet

designed by Giuseppe Viganò

Breath Collection by MARGHERITA FANTI

Questa collezione ha una forte ispirazione alle forme sinuose ed alle silhouette femminili. Un design rassicurante ed allo stesso tempo scultoreo, ogni pezzo ha un'identità propria ma un comune linguaggio. L'intera collezione è caratterizzata da forme piene e strutture massicce. Speciali trapuntature creano un pattern esclusivo. Elementi d'arredo sempre attenti al dettaglio ed alla sartorialità che si sposano bene con la filosofia dell'azienda.

This collection was strongly inspired by curved shapes and the female silhouette. With a design that is simultaneously reassuring and sculptural, each piece has its own identity but with a common language. The whole collection features full volumes and solid structures. Special quilted patterns create an exclusive tessellated surface. These furnishing elements were designed with attention to detail and sartorial precision, which both fit nicely into the company's corporate philosophy.

Эта коллекция в большой степени вдохновлена извилистыми формами и женственными силуэтами. Каждое изделие расслабляющего и в то же время скульптурного дизайна обладает собственной индивидуальностью, объединенной общими выразительными средствами. Коллекцию в целом отличают насыщенные формы и массивные структуры. Особая стежка создает эксклюзивный рисунок. Элементы обстановки, постоянно внимательные к деталям и качеству исполнения, точно соответствуют философии компании.

该系列的灵感源自蜿蜒的造型和柔媚的轮廓。兼具安全感与雕塑感的设计，每件作品都有自己的标志，但都有共同的语言。整个系列的特点为形状饱满，结构庞大。特殊绗缝营造独特图案。家具元素始终着重于细节和剪裁，与公司理念相得益彰。











SOFA | NIP
FABRIC | CAT.D DESCRIBE 282
METAL INSERT | BLACK ROSE GOLD











SMALL TABLE | HARPER
STRUCTURE | ROSE METAL LACQUERED
METAL INSERT | BLACK ROSE GOLD
TOP | CIPOLLINO MARBLE

SMALL TABLE | HARPER
STRUCTURE | P.3 SUEDE 410048
METAL INSERT | BLACK ROSE GOLD
TOP | SILVER STREAM

SMALL TABLE | HARPER
STRUCTURE | ROSE METAL LACQUERED
METAL INSERT | BLACK ROSE GOLD
TOP | BRONZE MIRROR







SMALL TABLE | HARPER
STRUCTURE | BLUE LEAD METAL LACQUERED
METAL INSERT | BRIGHT SHADED BROWN
TOP | SMOKY MIRROR

SMALL TABLE | HARPER
STRUCTURE | BLUE LEAD METAL LACQUERED
METAL INSERT | BRIGHT SHADED BROWN
TOP | SMOKY MIRROR

SMALL TABLE | HARPER
STRUCTURE | BLUE LEAD METAL LACQUERED
METAL INSERT | MATT CHAMPAGNE GOLD
TOP | CALCITE AZUL MARBLE



OUR MISSION IS
EXCLUSIVENESS AND
THE ABILITY TO MAKE
EACH PIECE UNIQUE.







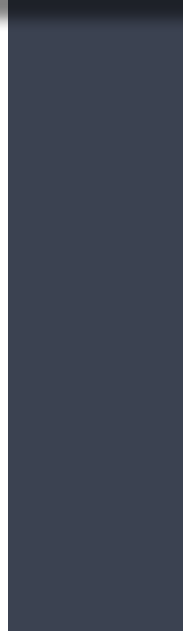
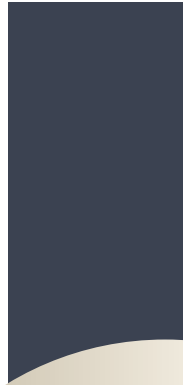
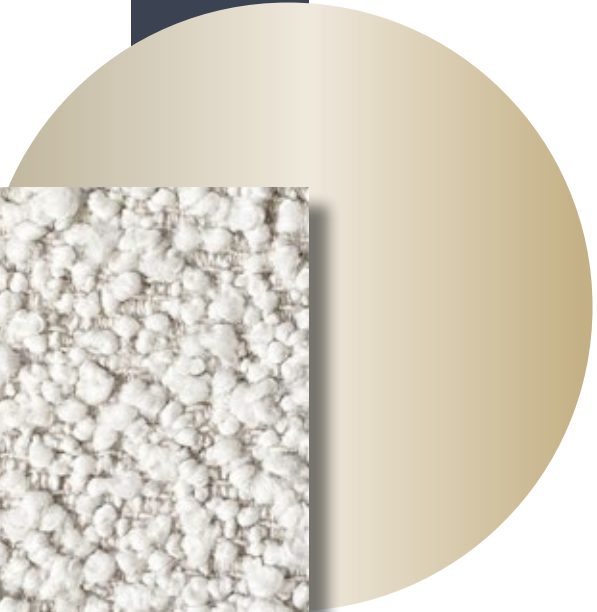
SOFA | NIP
LEATHER | P.9 NABUCK 1720
FRONT | P.9 NABUCK 1720 WITH "GROOVE" QUILTING
METAL INSERT | BRIGHT LIGHT GOLD







HIGH LEVELS OF
CUSTOMISATION FOR
EVERY PROJECT.







SOFA | NIP
LEATHER | P.9 NABUCK 8016
FRONT | P.9 NABUCK 8016 WITH "GROOVE" QUILTING
METAL INSERT | BRIGHT BLACK CHROME















ARMCHAIR | COCOON
LEATHER | P.9 NABUCK 1720
EXTERNAL BACK | P.9 NABUCK 1720 WITH "GROOVE" QUILTING
BASE | BLACK ROSE GOLD





ARMCHAIR | COCOON
FABRIC | CAT.F VELVET 75
BASE | MATT SATINED BRONZE



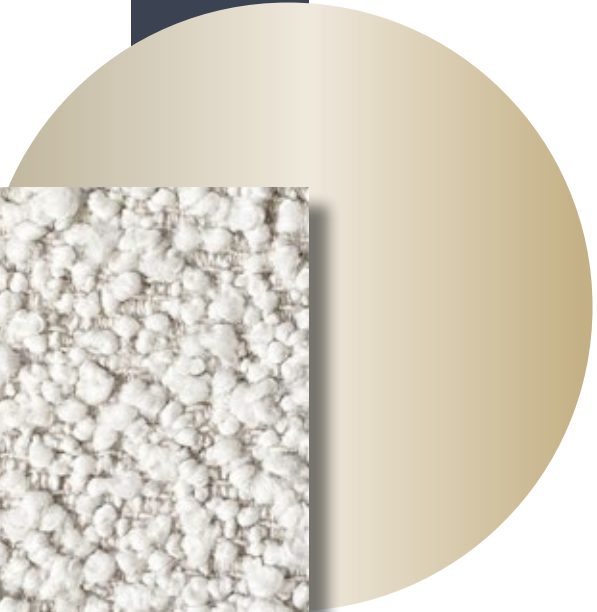




ARMCHAIR | COCOON
LEATHER | P.12 NABUCK SILK 9001
EXTERNAL BACK | P.6 JACINTA 02
BASE | MATT SATINED BRONZE



HIGH LEVELS OF
CUSTOMISATION FOR
EVERY PROJECT.



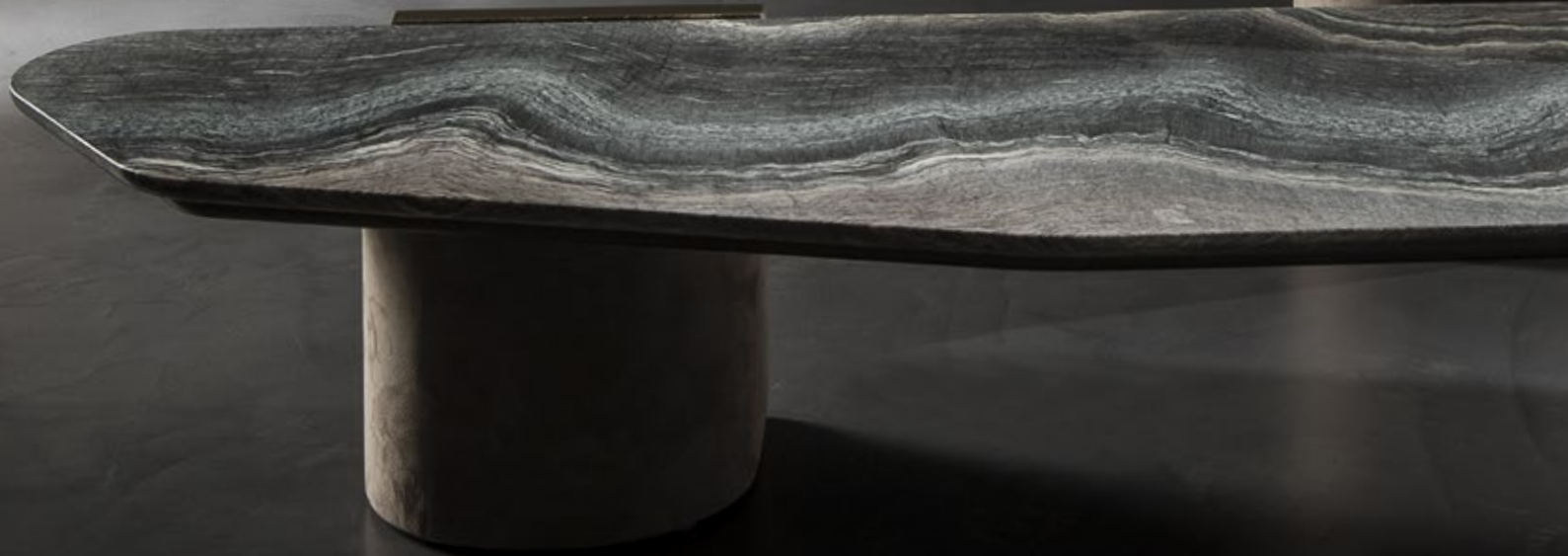
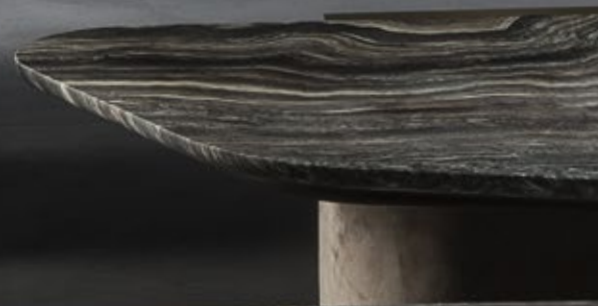




SMALL TABLES | OFFSET
TOP | CIPOLLINO MARBLE
LEG | MOKA TINTED WOOD WITH "WAVY" TEXTURE
METAL INSERT | BLACK ROSE GOLD









SMALL TABLES | OFFSET
TOP | CIPOLLINO MARBLE
LEG | P.12 NABUCK 1720
METAL INSERT | BLACK ROSE GOLD



SMALL TABLE | HALO
STRUCTURE | P.9 NABUCK 1720 WITH "GROOVE" QUILTING
TOP | CIPOLLINO MARBLE
METAL INSERT | BLACK ROSE GOLD

SMALL TABLE | HALO
STRUCTURE | P.9 NABUCK 1712 WITH "GROOVE" QUILTING
TOP | SILVER STREAM MARBLE
METAL INSERT | BRIGHT LIGHT GOLD



Breath Collection by GIUSEPPE VIGANÒ

La collezione disegnata per Longhi recupera il tubo in metallo, elemento modernista fortemente presente nella storicità, che viene reinterpretato come elemento cardine della collezione. Addolcito da una leggera curvatura diventa un elegante abbraccio che contiene oggetti e imbottiti dalle linee essenziali e dalle proporzioni ariose e leggere. Altro dettaglio dall'impatto visivo molto forte è la lavorazione scanalata che nasce da suggestioni decorative classiche, reinterpretate divenendo raffinato segno contemporaneo.

This collection designed for Longhi takes back the metal tube, a modernist element that has always been present historically, and now reinterpreted as a key element in the collection. Softened by a slight curvature, it becomes an elegant line that embraces objects and padded cushions, with their own essential lines and light, generously-sized proportions. Another visually striking detail is the grooved surface process that the designer invented, which evolved from classical decorative techniques reinterpreted to become refined contemporary patterns.

Созданная для Longhi коллекция вновь обращается к очень популярному в прошлом элементу стиля «модерн», металлической трубке, которая становится ее ключевым элементом. Смягченная небольшим закруглением, она превращается в элегантные объятия, обнимающие предметы и мягкую мебель лаконичных очертаний и легких воздушных пропорций. Еще одной очень эффектной деталью являются предложенные тем же дизайнером каннелюры, вдохновленные классическими элементами декора, которые в новой интерпретации становятся изысканным знаком современности.

该系列专为 Longhi 设计，重启了金属管这一强烈存在于历史中的现代主义元素，并被重新诠释为该系列的关键元素。轻微的弯曲使其柔和，好似一个优雅의拥抱，包含具有基本线条和轻盈通风比例的单品和软包。另一个极具视觉冲击力的细节是设计师亲自打造的凹槽工艺，源自经典装饰建议，并重新诠释为精致的当代标志。







SOFA | EDGAR
FABRIC | CAT.D 627 COL. 01
PIPING | P.12 NABUCK SILK 9001
METAL | BRIGHT BLACK CHROME
BASE AND TUBES COVERING | "RENOVA" MP-430204
SIDE TABLES | ARABESCATO OROBICO MARBLE















SOFA | EDGAR
LEATHER | P.12 NABUCK SILK 9001
PIPING | P.3 MIAMI 41018
METAL | BRIGHT SHADED BROWN
BASE AND TUBES COVERING | "RENOVA" C-28



SOFA | EDGAR
LEATHER | P.12 NABUCK SILK 9001
PIPING | P.3 MIAMI 41018
METAL | BRIGHT SHADED BROWN
BASE AND TUBES COVERING | "RENOVA" C-28
SIDE TABLE | MATT EUCALYPTUS







INIMITABLE PIECES
100% MADE IN ITALY.











SOFA | EDGAR
FABRIC | CAT.D 627 COL. 01
PIPING | P.12 NABUCK SILK 9001
METAL | BRIGHT BLACK CHROME
BASE AND TUBES COVERING | "RENOVA" MP-430204
SIDE TABLE | ARABESCATO OROBICO MARBLE









SMALL TABLE | RACHEL
TOP | SILVER STREAM MARBLE
BASE | GLOSSY EUCALYPTUS
METAL | BRIGHT BLACK CHROME





POUF | TOBY
FABRIC | CAT.D DESCRIBE 282
PIPING | P.12 NABUCK SILK 9001
METAL SERVICE TOP | BRIGHT SHADED BROWN

SMALL TABLE | TOBY
TOP | CARRARA MARBLE
METAL | BRIGHT SHADED BROWN
BASE AND TUBES COVERING | "RENOVA" C-28







LEATHERS, FABRICS
AND METALS TOGETHER
IN ENDLESS
COMBINATIONS.







CABINET | STEVEN
TOP | SILVER STREAM MARBLE
STRUCTURE | P.3 TECSUEDE 5119
METAL | BRIGHT SHADED BROWN
TUBES COVERING | "RENOVA" MP-560191









CABINET | STEVEN
TOP | ARABESCATO OROBICO MARBLE
STRUCTURE | GLOSSY EUCALYPTUS
METAL | BRIGHT SHADED BROWN
TUBES COVERING | "RENOVA" MP-560191









CABINET | STEVEN
TOP | CARRARA MARBLE
STRUCTURE | MATT ERABLE
METAL | BRIGHT SHADED BROWN
TUBES COVERING | "RENOVA" MP-560191







ESSENTIAL LINES AND
ARCHITECTURAL VOLUMES
IN HARMONY WITH THE
SURROUNDING SPACE.







TABLE | DOMINIC
TOP | ARABESCATO OROBICO MARBLE
LEGS | MACADAMIA TINDED ASH
METAL INSERT | BRIGHT SHADED BROWN









TABLE | DOMINIC
TOP AND LEGS | BEOLA ARGENTATA













CABINET | KIMMEL
TOP AND INSERT | BEOLA ARGENTATA
STRUCTURE | P.3 TECSUEDE 1043









CABINET | KIMMEL
TOP AND INSERT | BEOLA ARGENTATA
STRUCTURE | MATT EUCALYPTUS









TABLE | MAVERICK
TOP | ARABESCATO OROBICO MARBLE
LEGS | P.3 TECSUEDE 5311
METAL BASE | SHADED COPPER

CHAIR | KIRA
INSIDE FABRIC | CAT.D 627 COL. 01
OUTSIDE LEATHER | P.6 SOFFIO 5006
METAL | BRIGHT BLACK CHROME
TUBES COVERING | "RENOVA" MP-440153













CHAIR | KIRA
INSIDE FABRIC | CAT.D 627 COL. 01
OUTSIDE LEATHER | P.6 SOFFIO 5011
METAL | BRIGHT BLACK CHROME
TUBES COVERING | "RENOVA" MP-480153







DESCRIBE *Fabric*

Cat.D

33% COTONE / COTTON
05% NYLON / NYLON
37% ACRILICO / ACRYLIC
25% VISCOSA / VISCOSE

MARTINDALE (abrasion resistance test) 50.000 CYCLES



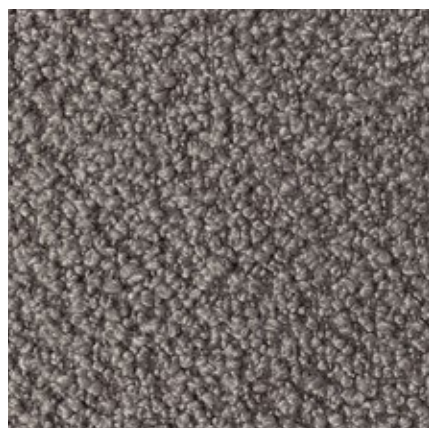
DESCRIBE 282



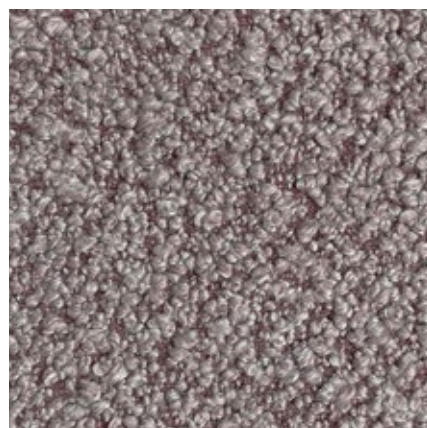
DESCRIBE 14



DESCRIBE 16



DESCRIBE 284



DESCRIBE 07



DESCRIBE 10



DESCRIBE 28

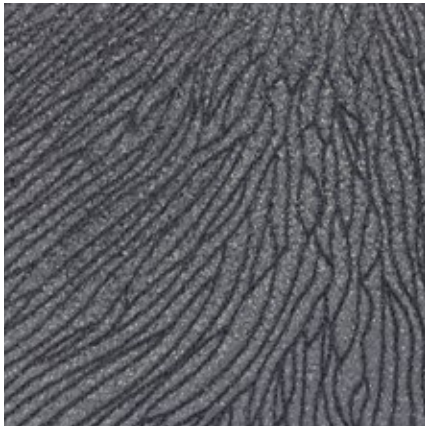


VELVET *Fabric*

Cat. F

100% POLIESTERE / POLYESTER

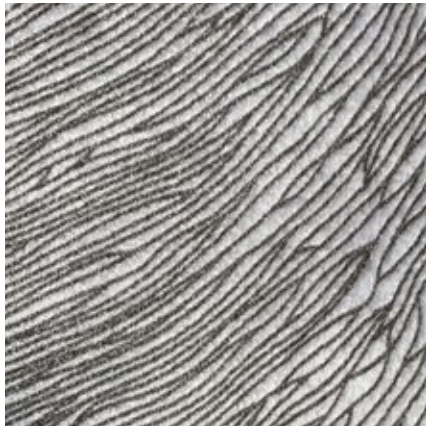
MARTINDALE (abrasion resistance test) 50.000 CYCLES



VELVET 54



VELVET 75



VELVET 90

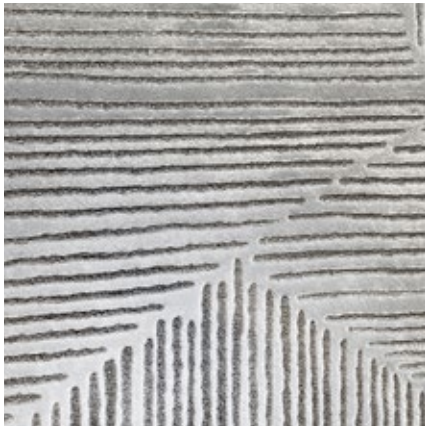


TAKAO *Fabric*

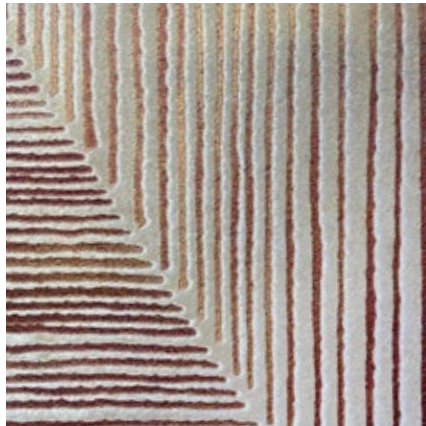
Cat. P.6

100% POLIESTERE / POLYESTER

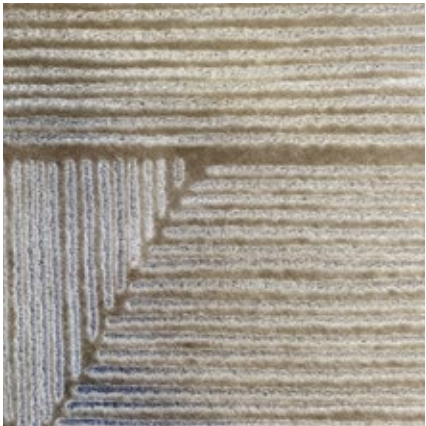
MARTINDALE (abrasion resistance test) 100.000 CYCLES



TAKAO 01



TAKAO 02



TAKAO 04

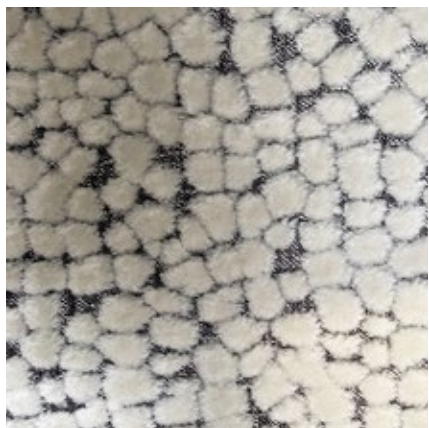


ATIRA *Fabric*

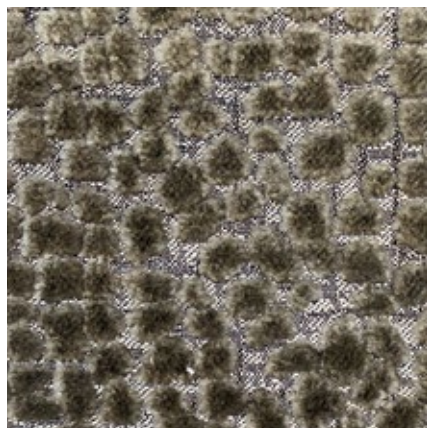
Cat. P.6

58% POLIESTERE / POLYESTER
42% VISCOSA / VISCOSE

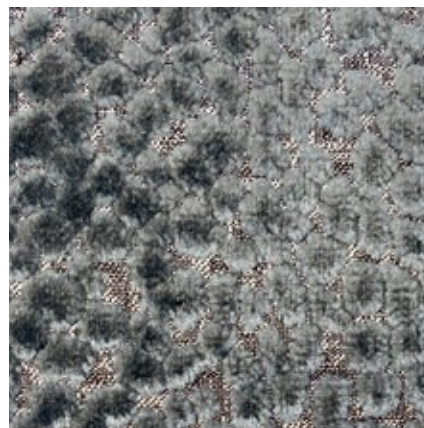
MARTINDALE (abrasion resistance test) 60.000 CYCLES



ATIRA 01



ATIRA 03



ATIRA 04



JACINTA *Fabric*

Cat. P.6

41% VISCOSA / VISCOSE
32% POLIESTERE / POLYESTER
20% COTONE / COTTON

MARTINDALE (abrasion resistance test) 40.000 CYCLES



JACINTA 01



JACINTA 02



GRIMALDI *Fabric*

Cat. P.12

53% VISCOSA / VISCOSE
24% COTONE / COTTON
23% POLIESTERE / POLYESTER

MARTINDALE (abrasion resistance test) 40.000 CYCLES



GRIMALDI 01



GRIMALDI 03

CONCEPT/
ART DIRECTION /
GRAPHIC PROJECT
Studio Longhi

PHOTO
Andrea Pancino

FOTOLITO
CD Cromo

PRINT
Grafiche Boffi - Giussano (MB)

Printed in Italy: April 2023

**Produced by
LONGHI S.P.A.
ALL RIGHTS RESERVED**

The rights of the photographs are sole propriety of LONGHI S.P.A.
Total or partial reproduction in any form is prohibited.

LONGHI S.P.A. reserves the right to make the necessary changes
and improvements to the products described herein, at any time
and without notice.

LONGHI Logo, catalogue and advertising images are sole propriety
of LONGHI S.P.A, henceforth any use of the logo or adaptation
of images is strictly forbidden without LONGHI S.P.A. prior
approval; nonetheless, in any case the images must be used in
such a way that there is no reasonable doubt that those belong to
LONGHI S.P.A and refer to LONGHI S.P.A products. No part of this
publication can be reproduced or transmitted in any form or by
any means, both electronic or mechanical, including photocopying
and recording, or via any information storage and retrieval system,
without written permission of the publisher.

LONGHI